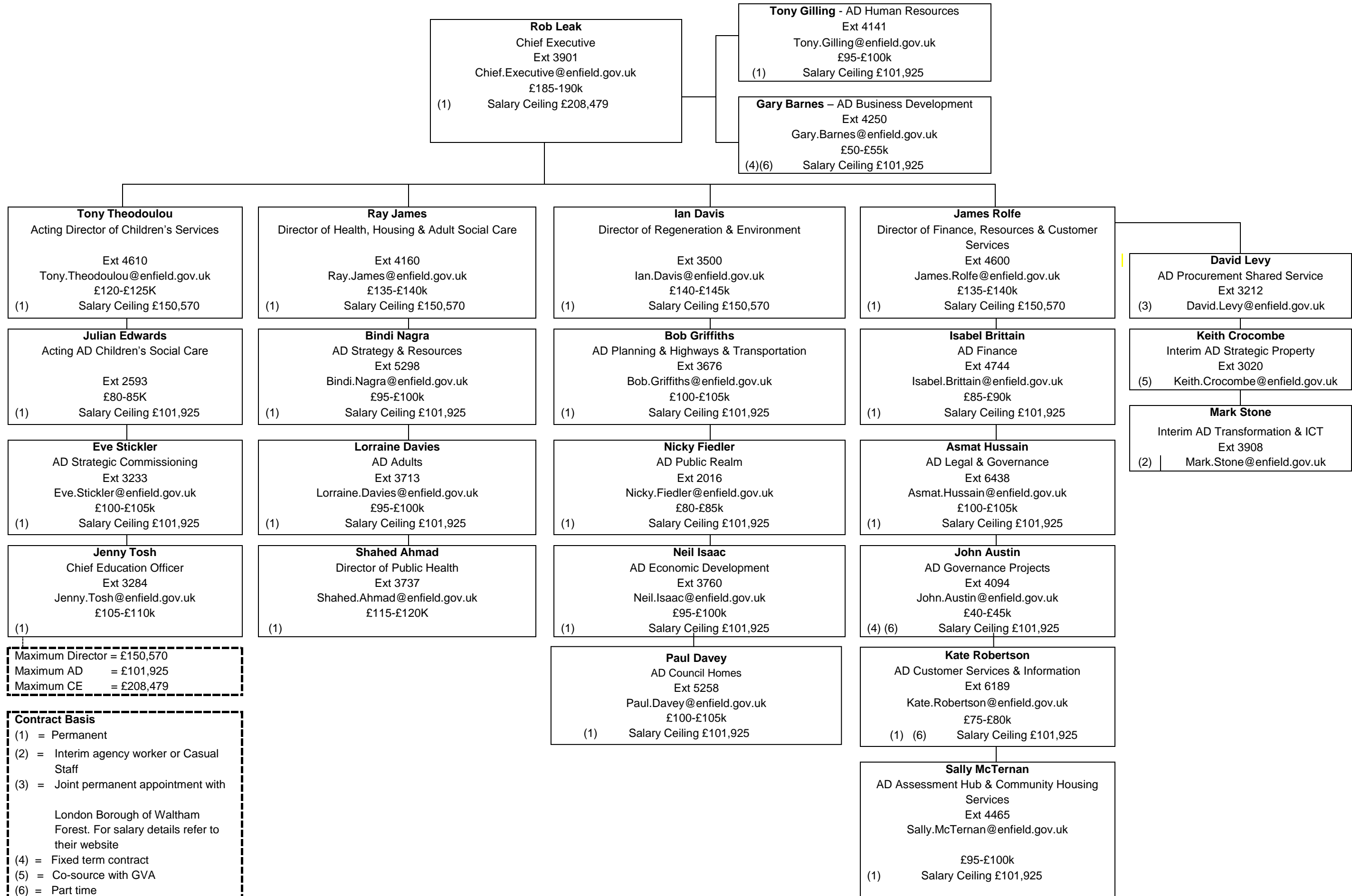


LONDON BOROUGH OF ENFIELD STRUCTURE CHART



Maximum Director = £150,570
 Maximum AD = £101,925
 Maximum CE = £208,479

Contract Basis
 (1) = Permanent
 (2) = Interim agency worker or Casual Staff
 (3) = Joint permanent appointment with London Borough of Waltham Forest. For salary details refer to their website
 (4) = Fixed term contract
 (5) = Co-source with GVA
 (6) = Part time

LONDON BOROUGH OF ENFIELD STRUCTURE CHART